

A Reliable Congestion Control Framework for Wireless Sensor Networks

^[1] P.Prittopaul, ^[2] R.Vijayalakshmi^[1] Assistant Professor, ^[2] PG Scholar, Velammal Engineering College, India.

Abstract:- Well designed congestion control techniques allow efficient transmission of significant volumes of data from a large number of nodes along one or more routes towards the data processing centers. Since the priority of generated traffic in network level is not uniform in WSNs, an architecture framework is proposed based on priority of generated traffics for service identification in network level in order to meet better service quality and efficiency. The proposed method is efficient in terms of end to end delay, throughput, power consumption and lifetime of network.

Index Terms: Alternative path, QoS, resource control, traffic management, Wireless Sensor Network (WSN)

I. INTRODUCTION

Wireless Sensor Networks (WSNs) consist of a number of sensor nodes which are widely distributed in environment [1]. Recent advances in electronics and wireless communication have led to design and build sensors with low power consumption, small size and low price. With the capabilities of pervasive surveillance, sensor networks have attracted significant attention in many applications domains, such as habitat monitoring [5], [6], object tracking [7], [8], environment monitoring [9]–[11], military [12, 13], disaster management [14], as well as smart environment [15]. With the increasing on the application of WSNs [17], different traffic levels generated by these sensors require providing different quality of services. In such condition, congestion occurs when data capacity transmitted through the network is above the network packet handling capacity [18]. Congestion occurs when the traffic load exceeds the available capacity on node level (buffer overflow) or link level (interference or contention) [19]. WSNs are divided into two categories of event-based and data stream-based in terms of collecting data and sending data [20]. In both methods, data stream is formed from source nodes to base station that can lead to the creation of congestion in network. In fact, mismatch of sent and received data rate leads to congestion formation in network. Therefore, reliability of sending packets and network throughput will be reduced. Lost packets due to congestion should be resent resulting waste of energy and reducing overall network lifetime [21]. Thus, congestion has direct effect on energy efficiency and quality of service.

Moreover, congestion in WSNs interacts with node energy limitation, low buffer capacity of nodes, sensitivity to delay and topology changing of sensors. Network congestion must be controlled in order to increase the reliability and longevity of network. To this end, the proposed protocol must be capable of controlling congestion step by step and end to end by rate setting in order to prevent packet loss and reducing traffic at each node and increasing network reliability. Most of the proposed protocols for congestion control of WSNs have disadvantages like having central congestion control mechanism (rate setting by sink), using only one of the mechanisms for traffic control or resource control as well as having the same throughput on all nodes [22]. Since the priority of generated traffic in network level is not uniform in WSNs, an architecture framework is needed based on priority of generated traffics for service identification in network level in order to meet better service quality and efficiency. According to above materials, paying attention to different priorities for different levels of network traffic is essential which is discussed in this paper. This remainder of this paper is organized as follows: in Section 2 recent works on congestion control protocols in WSNs are reviewed. In Section 3, the proposed method explained. Simulation results and performance evaluation are explained in Section 4. Finally in Section 5, conclusion is outlined.

II. RELATED WORKS

Recently many researched are performed for congestion control in WSNs [23]–[25]; among them, some of related works are reviewed. Wan et al. [26] proposed a complete research for detecting and preventing congestion in WSNs in

which congestion is detected by sampling wireless areas and supervising queue occupation. When congestion is detected, an upward inverse message is propagated and the upward nodes reduce the traffic volume to moderate congestion. In addition, closed circuit .In addition, closed circuit resource adjustment is used in which end-to-end constant long-term feedback from the base station to source nodes requires adjusting the transmission rate by using additive gain and multiplicative reduction. Although, this method supports congestion reduction, it does not insure balance among resources. Heikalabad et al. proposed a dynamic predictive congestion control which prevents congestion using precise rate control based on dynamic priority [27]. Some applications of multimedia wireless sensor networks may need urgent traffic sending to base station. The essential traffic requires low latency and high reliability so that immediate escape and defensive measures can be used when needed. The proposed approach in this protocol consists of three different types of traffic; immediate type that is important real-time traffic, fast type that is real-time traffic that is not so important and normal traffic. Any traffic with different priority is initialized, that may change in different phases of congestion. This strategy can prevent effectively the problem with extreme demands of quality and, service performance maintenance, when congestion is high in multimedia WSNs. Zhao et al. [28] proposed an alternative path-based congestion control mechanism that uses free resources in order to reduce the congestion of multi networks. Congestion of nodes is classified into two groups and two distributed algorithms are offered that can find an alternate route through a neighborhood table. Alternative path-based congestion control uses existing paths, instead of creating new paths due to the limited energy of sensor nodes. In addition, according to tree topology of sensor networks, one distributed algorithm is used in order to select the appropriate way through preventing w congestion simultaneously. The protocol focuses on WSN congestion that occurs by sudden data. The main focus of this protocol is on reducing traffic rate to avoid congestion.

In traffic-aware dynamic routing to alleviate congestion protocol of TADR, dynamic capacity timing is used in order to reduce congestion and maintain reliability through an aware of traffic dynamic routing protocol [29]. The main intention of this protocol is that if two nodes send their packets in the shortest path and the parent node is congested, source nodes must use a suitable alternative path consisting of passive nodes or low load once. Based on this method, a hybrid scalar potential field is defined which contains a depth field and a queue length field. The depth

field provides the basic routing backbone which routes the packets directly to the sink along the shortest path. The queue length field makes TADR traffic aware. When the congestion appears, the excessive packets are dynamically rerouted to multiple paths consisting of idle or under-loaded nodes. In a separate and fair congestion control a distributed and adaptive mechanism is provided for congestion control in sensor networks that seeks to find an optimal transmission rate for nodes [30]. In this scenario, two separate modules are used for network control and fairness among flows. Each node controls the overall rates of input and output. Firstly, one node calculates the increase (if the output rate is higher) or decrease (if the input rate is greater) of needed traffic. Then, the fairness control module is applied on this assembly and divides it to independent streams in order to achieve the desired fairness. Control information is carried in data packets. Sergiou et al. in [31] proposed a congestion control algorithm that creates alternative paths from sources to sinks to prevent congestion. Alternative path algorithm is based on a hierarchical tree that changes routs based on local information such as congestion of neighbors. In fact, a "source control" algorithm tries to reduce congestion of WSNs through simple steps to create dynamic alternative paths to sink.

III. THE PROPOSED METHOD

The proposed method in this paper tries to implement an acceptable level of reliability factor in network during the congestion avoidance and congestion control of sensor networks. The main motivation of the proposed method is that the mechanism uses both congestion control methods including source control and traffic management. The purpose of the proposed method is to obtain a congestion control mechanism that applies the highest reliability in sensor networks.

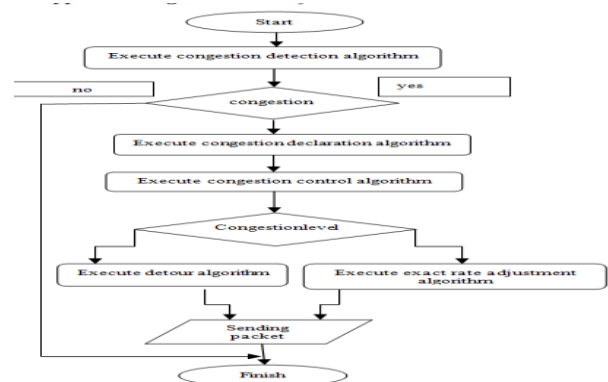


Fig. 1. The proposed congestion control plan

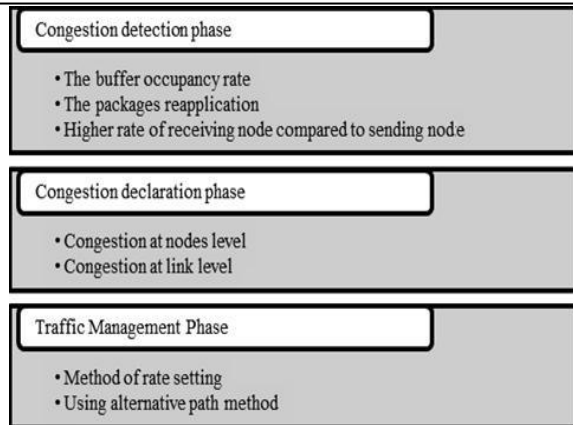


Fig. 2. The main stages of congestion control in the proposed method. The Propos-ed Method

Fig. 1 shows the proposed congestion control plan. If two source nodes send their packets in the shortest route and the receiving node is congested, the receiving node after detecting congestion and notifying the source nodes, will begin to implement an congestion control algorithm. Under normal circumstances, if a packet is received by node but receiving node cannot send packet the sink node, it must prioritize the data and place it in its buffer based on some preferences. However, if congestion conditions prevail, an appropriate congestion control algorithm must be implemented while each of data will be manipulated in node buffer based on their priorities. According to output phase, the congestion detection algorithm will send data to the sink or base station node by precise rate setting or by creating a suitable alternative path with low load or having passive neighbor nodes. Therefore high reliability and more energy saving scheme is achieved. In the proposed method, we need to design congestion detection mechanism, congestion declaration mechanism and congestion control mechanisms in order to provide a general method of congestion control. The proposed congestion control method as shown in Fig. 2, includes three main phases of congestion detection, congestion declaration and traffic management that traffic management phase itself is divided into two traffic control (rate setting) and resource control (alternative path). The details of the proposed method are explained in the following subsections.

A. Congestion Detection Phase

The main task of this phase is to detect congestion type. Two congestion types are distinguished: node level congestion and link level congestion. Node level congestion can be detected through every node buffer overflow while link level congestion is created because of

multiple accesses to a common media or link between two nodes or node shutdown because of ending energy.

In the proposed method, such information will be used:

crowded queue of a receiving node, demanding rate for packet retransmission in buffer, higher receiving rate to sending rate and etc. Node congestion in the buffer can be performed through implementing the algorithm on receiving packet. That is, if the buffer at each node reaches the congestion threshold right after receiving a new packet, it will begin to implement a congestion detection algorithm after calculating the absolute

priority of packet and putting it in queue. Buffer threshold is usually set 0.9 to queue length. Necessary conditions for occurrence or non-occurrence of congestion can be found according to the following algorithm

Algorithm : congestion detection

```

If Buffer_ used >= Buffer_Threshold OR Double_Req = true OR
Rate_in > Rate_out Then
    Congestion_Detection = True
    Call Congestion_Type Procedure
    (Buffer_used, Double_Req, Rate_in, Rate_in)
Else
    Congestion_Happen = False
End if
    
```

The congestion detection algorithm will be implemented according to the above parameters after occurrence of one or more conditions mentioned so far in each node and output of this algorithm will determine reasonably the presence or absence of congestion in the vicinity of node. In fact, in congestion detection phase, in addition to the detection of congestion, the type of congestion must also be determined. Finally congestion opposite method of the third phase will be selected according to conditions of these three criteria: queue occupancy, the ratio of buffer packets that are reapplied to total

number of packets in buffer, and the rate difference between receiving node and sending node that can be rate setting or path alternative method.

B. Congestion Declaration Phase

Usually congestion declaration can be performed in two implicit and explicit ways. In the proposed method, since

nodes must know the type of mechanism that is used to relieve congestion and they should be aware of congestion occurrence in their neighbors, the explicit congestion declaration is used. Therefore, they can choose an appropriate congestion control mechanism.

C. Congestion Control Phase

In the proposed method, instead of using just a single scheme, the main objective is to use both congestion control mechanisms: "traffic management" and "resource control". According to congestion type that has been occurred, one of these two methods will be adopted. Based on explicit congestion method, necessary information will be sent to each neighboring nodes. Afterward, resource control, path alternative or a new alternative path creation can be used for link type congestion control. All these are explained in the

following subsections.

❖ Traffic Management

In general, the incoming traffic at a node is in two main types: source traffic sensed by sensor and transit traffic which is the traffic transmitted from child nodes. Assume that these traffic rates denoted by R_s and R_t . As a result, the total amount of traffic at each node called R_{in} is defined as $R_{in} = R_t + R_s$. R_{in} is the total rate of all data flow in node i . Driving rate of node at time t is considered $A_{r,t}$ calculated according to Eq. (1).

$$A_{r,t} = \text{Maxrate} - R_{in,t} \quad (1)$$

Where $R_{in,t}$ shows total rate of all data flow in node i at time t . For node i , it can be concluded that the total rate of child nodes must be less than $A_{r,t}$ in order to keep away node i from congestion.

If the rate of packet transfer R_{trans} is greater than the rate of incoming traffic R_{in} , output rate will be equal to the rate of incoming traffic $R_{out} = R_{in}$. Otherwise, the packet transmission rate reaches to the output rate of packet that is R_{out} is close to R_{trans} . In the proposed method, Eq. (2) is used to calculate the rate of packet output.

$$R_{out} = \text{Min}(R_{trans}, R_{in}) \quad (2)$$

This suggests that R_{out} can be partially reduced through reducing R_{in} and increase through increasing it. It can be effective in achieving the main objective of this research that is congestion control be reliable.

❖ Control of Resources

With increasing the number of nodes in a sensor network, "resource control" method can enhance the performance in comparison with "traffic management" methods. It can deliver a lot of packets to sinks through using different paths to distribute the sudden traffic in order to reduce congestion. In the proposed approach this feature of resource control method is used for solving the problem of link level congestion. When the desired node receives the control packet of congestion declaration, it will find the congestion control method and will implement the resource control mechanism.

❖ Alternative path Method

The algorithm uses two data structures stack as well as priority queue. The queue contains nodes that are waiting to be processed, while the stack contains nodes that have already been processed.

Algorithm : Alternate Path Computation

```

put source node M in queue
if node is already in queue
then do not add it again
else
{
for (q=1; front = rear = 0,
front = rear = destination node; q++)
{
for(s=10; s<1; s--)
{
Stack[s] = queue[q]
front = front + 1
Put all adjacent nodes of node M at
the rear end of queue
rear = rear + 1
}
}
}

```

Return computed path by removing the nodes from stack 'q' and 's' are the variables which keep track of the location of respective node in the arrays of queue as well as stack respectively. It is easy to find an alternative path to send packets from congestion due to the large number of idle nodes. Therefore, traffic management process is performed

after declaring congestion and traffic can be controlled through replacing other path.

$$X = C / T \quad (3)$$

IV. EVALUATION AND EXPERIMENTAL RESULTS

In order to demonstrate the capability of the proposed method, it has been compared with Traffic-Aware Dynamic Routing (TADR) method [16] that is a well-known method to reduce traffic in WSNs. The evaluation is performed using NS-2 simulator. Important routing parameters such as energy consumption, end to end delay, network lifetime and throughput are measured to measure the performance. Simulations with different parameters such as simulation time are performed and the results of evaluations are outlined.

In this paper, several scenarios with different number of network nodes equal to 50, 100 and 250 nodes are carried out. The dimension of simulation environment for these scenarios is equal to 700 m×700 m. Radio propagation range for each node is considered 250 and its MAC layer protocol is selected as IEEE 802.11. In addition, there are two traffic flows simulates on the network that send fixed rate of packets to the network. Simulations have been carried out at different times: at 100,250 and 500 seconds. Buffer size is selected as 150 packets. Finally, position of nodes is considered to be random. All the simulations are performed once using the proposed method and again on the method of TADR to compare the results as demonstrated in the following subsections

A. End-to-end delay

End to end delay of wireless sensor networks refers to the time when information packets are transferred across the network from source node to destination node. Results show that end to end delay for proposed method is significantly lower compared to TADR. It shows that our proposed method has better performance at different times and this argument reflects the better performance of the proposed method.

B. Throughput

The measure is achieved through dividing received amount of data received at destination by data delivery time. In throughput, criteria such as packet delivery rate and end to end delay are also involved. The better these criteria, the network throughput will be higher. Throughput is expressed as

In Eq. (3) X represents the throughput and C shows the number of requests that have been completed. T represents the entire time.

C. Consumed energy

This measure represents the amount of energy that is consumed in routing. Consumed energy in the proposed method is lower compared to the TADR method. This is due to the rapid selection of alternatives which makes traffic not be on a specific route and total energy consumption on the network will be reduced through quick notification of congestion and selecting alternative appropriate routes. So in this case, the proposed method has better performance.

D. Network Lifetime

Network overall lifetime is the time when the network is stable and can send data packets and beyond this time the network is not under operation. As it can be seen in The proposed method has acted better than TADR in terms of network lifetime. This shows the superiority of the proposed method both on energy consumption and increasing lifetime of the network.

V. CONCLUSION

In order to resolve the congestion problem in Wireless Sensor Networks (WSNs), in this paper a solution for congestion control based on safe traffic management is proposed. Most proposed protocols for congestion control of WSNs suffer from some problems including central sink congestion control, using only one traffic control or resource control mechanisms and also having the same throughput for all nodes. However, the proposed method used both of “resource control” and “traffic management” approaches to congestion control in WSNs. In “resource control” part, the proposed method uses the available resources to reduce congestion and in “traffic management” part; it uses the exact rate setting. The main objective of the proposed solution is to avoid congestion problem and after that in second step, managing traffic with minimal energy consumption. Moreover, this method uses resource control strategy by selecting an alternative path that will control the traffics The simulation results show that the proposed method improves the throughput, end to end delay, energy consumption and lifetime as compared to TADR base method

REFERENCES

- [1] R. Mohammadi, Reza Javidan, and A. Jalili, "Fuzzy Depth Based Routing Protocol for Underwater Acoustic Wireless Sensor Networks", *Journal of Telecommunication, Electronic and Computer Engineering (JTEC)* 7, no. 1, pp. 81-86, 2015.
- [2] M. Keshtgary, Reza Javidan, and R. Mohammadi, "Comparative Performance Evaluation of MAC Layer Protocols for Underwater Wireless Sensor Networks", *Modern Applied Science*, Vol. 6, No. 3, 2012.
- [3] R Mohammadi, S.Y. Nabavi, and Reza Javidan, "MAC Protocols in Underwater Wireless Sensor Networks: Issues and Simulations", *Journal of Advances in Computer Research*, Vol. 5, No. 2, pp. 97-109, 2014.
- [4] K. Sohraby, D. Minoli, and T. Znati, *Wireless Sensor Networks Technology, Protocols, and Applications*, Hoboken, John Wiley & Sons, Inc, 2007.
- [5] A. Rozyyev, H. Hasbullah, and F. Subhan, "Indoor child tracking in wireless sensor network using fuzzy logic technique," *Research Journal of Information Technology*, vol. 3, no. 2, pp. 81-92, 2011.
- [6] R. Szewczyk, E. Osterweil, J. Polastre, M. Hamilton, A. Mainwaring, and D. Estrin, "Habitat monitoring with sensor networks," *Communications of the ACM*, vol. 47, no. 6, pp. 34-40, 2004.
- [7] S. H. Chauhdary, A. K. Bashir, S. C. Shah, and M. S. Park, "EOATR: energy efficient object tracking by auto adjusting transmission range in wireless sensor network," *Journal of Applied Sciences*, vol. 9, no. 24, pp. 4247-4252, 2009.
- [8] P. K. Biswas and S. Phoha, "Self-organizing sensor networks for integrated target surveillance," *IEEE Transactions on Computers*, vol. 55, no. 8, pp. 1033-1047, 2006.
- [9] L. T. Lee and C. W. Chen, "Synchronizing sensor networks with pulse coupled and cluster based approaches," *Information Technology Journal*, vol. 7, no. 5, pp. 737-745, 2008.
- [10] N. Sabri, S. A. Aljunid, B. Ahmad, A. Yahya, R. Kamaruddin, and M. S. Salim, "Wireless sensor actor network based on fuzzy inference system for greenhouse climate control," *Journal of Applied Sciences*, vol. 11, no. 17, pp. 3104-3116, 2011.
- [11] D. Kumar, "Monitoring forest cover changes using remote sensing and GIS: a global prospective," *Research Journal of Environmental Sciences*, vol. 5, pp. 105-123, 2011.
- [12] J. Yick, B. Mukherjee, and D. Ghosal, "Wireless sensor network survey," *Computer Networks*, vol. 52, no. 12, pp. 2292-2330, 2008.
- [13] T. Arampatzis, J. Lygeros, and S. Manesis, "A survey of applications of wireless sensors and wireless sensor networks," in *Proceedings of the 20th IEEE International Symposium on Intelligent Control (ISIC '05)*, pp. 719-724, June 2005.
- [14] Y.-C. Tseng, M.-S. Pan, and Y.-Y. Tsai, "Wireless sensor networks for emergency navigation," *Computer*, vol. 39, no. 7, pp. 55-62, 2006.
- [15] A. Mahmood, K. Shi, Sh. Khatoun, and M. Xiao, "Data Mining Techniques for Wireless Sensor Networks: A Survey," *International Journal of Distributed Sensor Networks* Volume 2013, 24 pages, 2013.
- [16] Brahma S, Chatterjee M, Kwiat K. "Congestion Control and Fairness in wireless sensor networks." *Int. Conf. on 8th IEEE Pervasive Computing and Communications Workshops (PERCOM Workshops)*, IEEE; Mannheim; pp. 413-18, 2010.
- [17] M.C. Vuran, and I.F. Akyildiz. "XLP: A cross layer protocol for efficient communication in wireless sensor networks", *IEEE Trans. Mobile Computing*, 9(11), pp. 1578-1591, Nov. 2010.
- [18] J. Sayyad, and N.K. Choudhari, "Congestion Control Techniques in WSN and Their Performance Comparisons", *International Journal of Multidisciplinary and Current Research*, 3, 108-113, 2015.
- [19] M.A. Kafi, D. Djenouri, J. Ben-Othman, and N. Badache, "Congestion Control Protocols in Wireless Sensor
-

Networks: A Survey”, IEEE Communications Surveys & Tutorial, 16(3), 2014.

[20] H. Karl, and A. Willig, Protocols and architectures for wireless sensor networks. John Wiley & Sons, New York, New York, USA; 2005.

[21] Y.M. Lu, and V.W.S.Wong, “An energy efficient multipath routing protocol for wireless sensor networks”, International journal of communication systems, 14; 20(7):747-766, 2007.

[22] R. Hashemzahi, R. Nourmandipour, and F. koroupi, “Congestion in Wireless Sensor Networks and Mechanisms for Controlling Congestion”, Indian Journal of Computer Science and Engineering (IJCSE), 4(3),204-207, 2013.

[23] R.A. Ostwal, M.B. Kalkumbe, and S.A. Bhosale, “An explore to congestion control in wireless sensor network”, International Journal of Engineering and Innovative Technology (IJEIT), 4(7), 118-120, 2015.

[24] S. Pansare, and C.V. Kulkarni, “Design of Congestion Control Protocol for WMSN”, International Journal of Innovative Technology and Exploring Engineering (IJITEE), 5(1), 58-62, 2015.

[25] P. Gowthaman, and R. Chakravarthi, “Survey on Various Congestion Detection and Control Protocols in Wireless Sensor Networks”, International Journal of Advanced Computer Engineering and Communication Technology (IJACECT), 2(4), 15-19, 2013.

[26] C.Y. Wan, S.B. Eisenman, and A.T. Campbell, “Energy-Efficient Congestion Detection and Avoidance in Sensor Networks”, ACM Transactions on Sensor Networks, 7(4), 32.1-32.31.

[27] S.R. Heikalabad, A. Ghaffari, M.A. Hadian, and H. Rasouli, “DPCC:Dynamic predictive congestion control in wireless sensor networks”, International Journal of Computer Science Issues, 8(1):472-477, 2011.

[28] K. Zhao, W. Liu, M.S. Wong, and J. Song, “Alternative path-based congestion control in many-to-one sensor networks”, In 5th IEEE International ICST Conference on Communications and Networking in China (CHINACOM); Aug 25-27; Beijing, China, 2010.

[29] F. Ren, S.K. Das, and C.H. Lin, “Traffic-aware dynamic routing to alleviate congestion in wireless sensor networks” IEEE Transactions on Parallel and Distributed Systems, 21; 22(9):1585-1599, 2011.

[30] S. Brahma, M. Chatterjee, K. Kwiat, and P.K.Varshney, “Traffic management in wireless sensor networks: Decoupling congestion control and fairness. Computer Communications”, 35(6):670-681, 2012.

[31] C. Sergiou, V. Vassiliou, and A. Paphitis, “Hierarchical Tree Alternative Path (HTAP) Algorithm for congestion control in wireless sensor networks”, Ad Hoc Networks, 11(1):257-272, 2013.